


MAPA HIPSOMÉTRICO

1:5.000 MAPA DE PENDENTES

1:5.000









Lenda de simboloxía

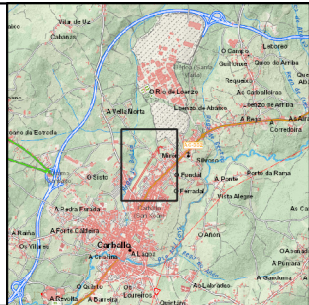
 Ámbito de actuación do PEID

Hipsométrico



Pendientes

- | | |
|--|---|
|  Plano (0% - 1%) |  Fortemente inclinado (10% - 15%) |
|  Moi lixeiramente inclinado (1% - 2%) |  Moderadamente inclinado (15% - 30%) |
|  Lixeiramente inclinado (2% - 5%) |  Escarpado (30% - 60%) |
|  Inclinado (5% - 10%) |  Moi escarpado (>60%) |



CONCELLO DE CARBALLO	
PLAN ESPECIAL DE INFRAESTRUTURAS E DOTACIÓN APERTURA SISTEMA XERAL VIARIO SXVII (B, C, D, E)	
Iria Pérez Miranda Arquitecta. Nº. Colex.: 3194	Ignacio Lázaro Quintela Arquitecto. Nº. Colex.: 3877
Aprobación Inicial	
Mapa hipsométrico e mapa de pendientes.	
15019_PEID-SXVII_202510_10_PINF_05HIP	
1:5.000	